



Catalogue :

**SERIE 900 KORE**

Chapter :

**RANGES 900 KORE**

Article :

**C-I925 400V 3**

Code:

**19034112**

<u>DIMENSIONS AND WEIGHTS</u>		<u>Net dimensions</u>	<u>Packed</u>
Length	mm	<b>400,00</b>	<b>1.022,00</b>
Depth	mm	<b>930,00</b>	<b>440,00</b>
Height	mm	<b>290,00</b>	<b>535,00</b>
Weight	kg	<b>40,00</b>	<b>55,00</b>
Volume	m3	<b>0,11</b>	<b>0,24</b>

<u>ELECTRICITY</u>		<u>50/60Hz</u>	
Power	<b>400V</b>		<b>10,00 kW</b>
Connections	230 V. 1+N+T 230 V. III+T 400 V. III+N+T		

GAS Not necessary

WATER Not necessary

STEAM Not necessary

AIR Not necessary

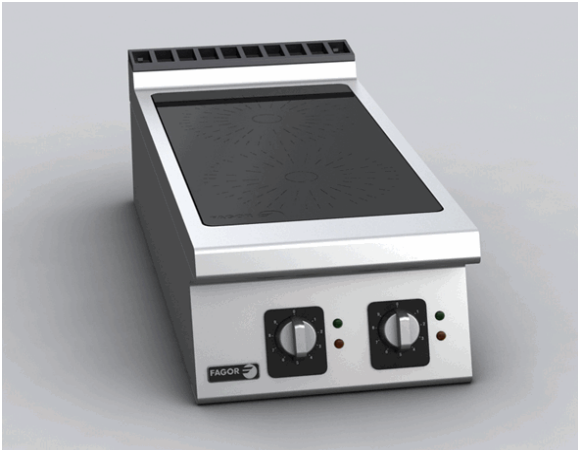
DESCRIPTION

2-ZONE INDUCTION COOKING TOP, C-1925  
 Induction tops can work with containers, pans and frying pans with a ferrous metal bottom.  
 Depending on the container, you may stew, boil, make soup, legumes, scrambled eggs, fried dishes...  
 2 mm stainless AISI-304 steel top with rounded edges for easy cleaning.  
 Laser cut and automatic welding for a perfect adjustment of sides between modules with square angle finish.  
 6mm thick vitro ceramic glass tight-sealed on a 2 mm thick AISI-304 stainless steel top.  
 Flat Ø 280 mm working areas with 5 kW heating power for fast heating.  
 Ideal for a quick customized service.  
 Number of cooking areas: 2.  
 Perfect control of cooking thanks to the power regulator with 10 different power levels for delicate recipes or a quick service.  
 It supplies power only to the container contact area. The rest of the surface stays cool.  
 It only works when a cooking container is detected. When you remove it, the stove stops heating.  
 This means a great power save (power consumption is reduced around 50% when compared to gas burners).  
 The working area is more comfortable, since the power is focused on the container to be heated. This reduces heat irradiation and dispersion and the cooking temperature is reached in a shorter time.  
 Induction surfaces do not receive heat from a heat source underneath (like conventional ceramic stoves) and, therefore, no food remaining will get stuck on the surface and cleaning will be easier.  
 Overheating safety. Fault diagnoses.  
 Water-tight and protecting-support controls.  
 High temperature protector for the chimney made of enamelled cast iron.  
 Front access to components.  
 According to European standards for components and panels temperature, efficiencies and combustion, and sanitary regulations (EN-60335 and EN-203)  
 IPX5 grade water protection equipment.  
 Maximum power: 10.0 kW  
 Dimensions: 400 x 930 x 290 mm.

SOUND LEVEL < 65,00 db

INSTALLATION - CONNECTIONS Ø





Catalogue :  
**SERIE 900 KORE**

Chapter :  
**RANGES 900 KORE**

Article :  
**C-1925 400V 3**

Code :  
**19034112**

**SCHEMA - DIMENSIONS**

