



Catalogue :

SERIE 900 KORE

Chapter :

RANGES 900 KORE

Article :

W-I905 400V 3

Code:

19032621

<u>DIMENSIONS AND WEIGHTS</u>		<u>Net dimensions</u>	<u>Packed</u>
Length	mm	400,00	1.022,00
Depth	mm	930,00	440,00
Height	mm	290,00	535,00
Weight	kg	40,00	55,00
Volume	m3	0,11	0,24

<u>ELECTRICITY</u>		<u>50/60Hz</u>	
Power	400V		5,00 kW
Connections	230 V. 1+N+T		
	230 V. III+T		
	400 V. III+N+T		

GAS Not necessary

WATER Not necessary

STEAM Not necessary

AIR Not necessary

DESCRIPTION

INDUCTION WOK, W-I905

Induction woks allows the use of induction friendly containers with a suitable size (wok type).

Woks are used for frying, steaming, poaching, boiling, braising, searing, stewing, making soup, smoking and roasting nuts.

2 mm stainless AISI-304 steel top with rounded edges for easy cleaning.

Laser cut and automatic welding for a perfect adjustment of sides between modules with square angle finish.

6mm thick vitro ceramic glass wok surface tight-sealed on a 2 mm thick AISI-304 stainless steel top.

Bowl-shaped Ø 300 mm wide and 70 mm deep wok heating area, with 5 kW heating power. Ideal for a quick customized service.

Perfect control of cooking thanks to the power regulator with 10 different power levels for delicate recipes or a quick service.

It supplies power only to the container contact area. The rest of the surface stays cool.

It only works when a cooking container is detected. When you remove it, the stove stops heating.

This means a great power save (power consumption is reduced around 50% when compared to gas burners).

The working area is more comfortable, since the power is focused on the container to be heated. This reduces heat irradiation and dispersion and the cooking temperature is reached in a shorter time.

Induction surfaces do not receive heat from a heat source underneath (like conventional ceramic stoves) and, therefore, no food remaining will get stuck on the surface and cleaning will be easier.

Water-tight and protecting-support controls.

High temperature protector for the chimney made of enamelled cast iron.

Front access to components.

According to European standards for components and panels temperature, efficiencies and combustion, and sanitary regulations (EN-60335 and EN-203)

IPX5 grade water protection equipment.

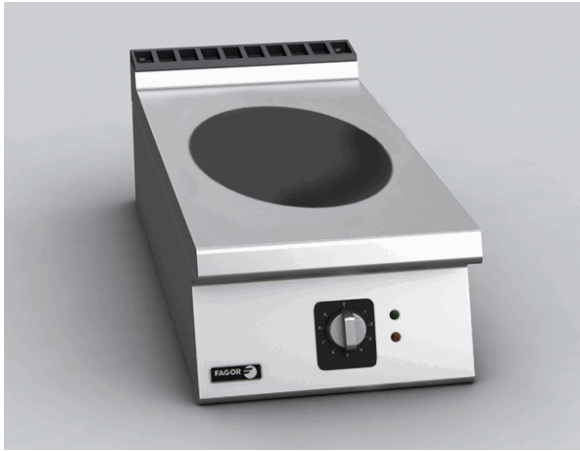
Maximum power: 5.0 kW

Dimensions: 400 x 930 x 290 mm.

SOUND LEVEL < **65,00** db

INSTALLATION - CONNECTIONS Ø





Catalogue :
SERIE 900 KORE

Chapter :
RANGES 900 KORE

Article :
W-1905 400V 3

Code :
19032621

SCHEMA - DIMENSIONS

